

许半愚 (1914–1968)

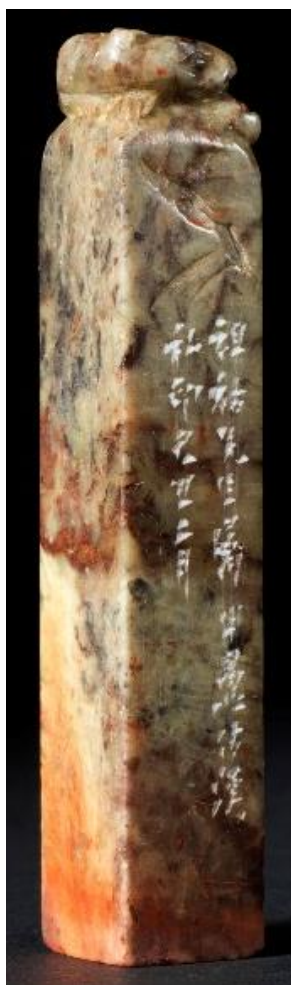
许半愚，潮安庵埠人。1914–1968。长期在汕头任美术老师。「文革」期间，备受冲击，1968年12月去世。1962年汕头市文联曾举办吴芳谷、许半愚画展。据孙淑彦1996年撰写《潮汕篆刻略考》，其中有「许半愚」一条，引民国《潮州艺文志》载《愚庐印存》铃印本，谓：「半愚，永嘉方介堪及门，仿汉印，刀法苍劲。」交友方面，许半愚曾于1948年4月为新加坡收藏家陈之初刻朱文「之初」方印，边款称「半愚作此，颇韵悲翁」；又为画家黄独峰刻白文「潮州黄独峰」和朱文「甘为孺子牛」二印。

XU Banyu (1914–1968)

Xu Banyu (1914–1968), a native of Chaozhou, Guangdong, was an art teacher in Shantou, who came under criticism during the Cultural Revolution and passed away in December 1968. The Cultural Federation in Shantou once held the exhibition of paintings by him and his fellow artist Wu Fanggu in 1962. According to Sun Shuyan, Xu was a student of Fang Jiekan and a seal carver following the Han tradition and carving seals that were robust in execution, as quoted from the Republican publication *Chaozhou yiwen zhi*. He had close association with artists and collectors as he had made seals for the Singaporean collector Chen Zhichu and painter Huang Dufeng.

广东、入粤、居港、旅港印人

Seal carvers originated from, travelling to or living in Guangdong or Hong Kong



C1994.0379

兽钮方形四字白文印

近现代（1949）

许半愚

石（寿山 / 青田 / 昌化）

印文： 李祖佑印

尺寸： 纵：1.5 厘米

横：1.5 厘米

高：8.2 厘米

Square Seal with Four Incised Characters

Modern period (1949)

XU Banyu

Stone (Shoushan / Qingtian / Changhua)

Seal characters: Li Zuyou yin

Size: W: 1.5 cm

L: 1.5 cm

H: 8.2 cm